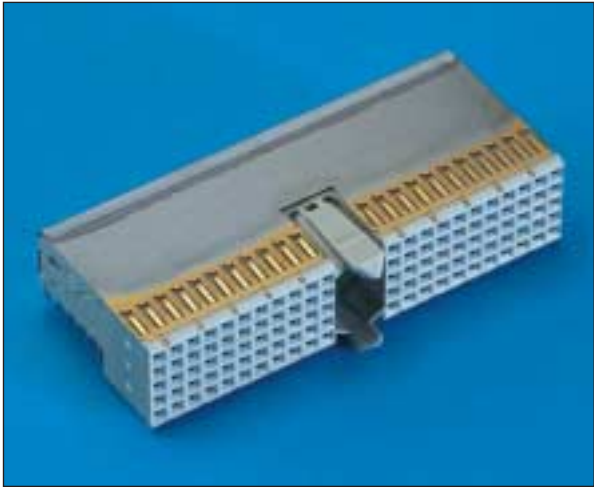


J1/J4 Type A Right Angle Female for Daughter Cards

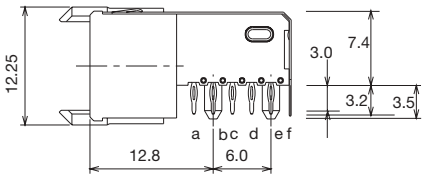
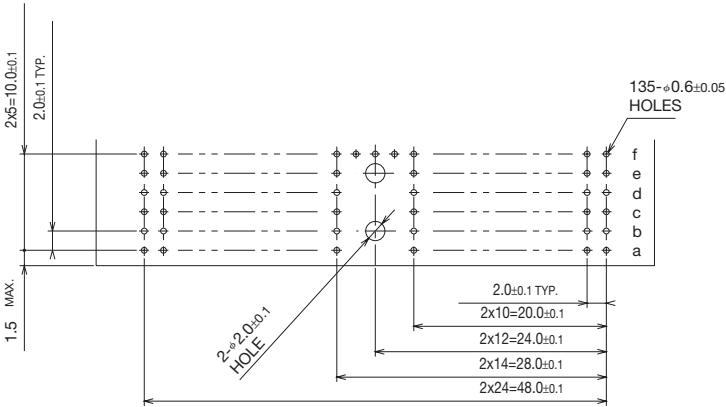
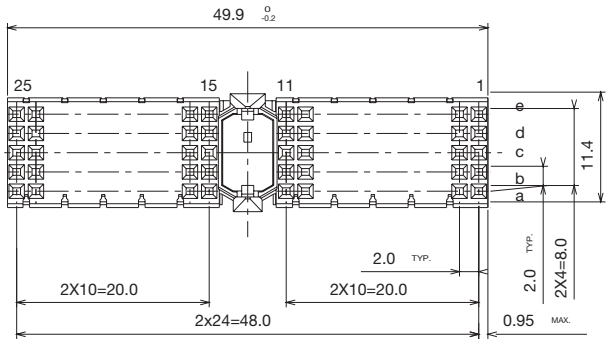
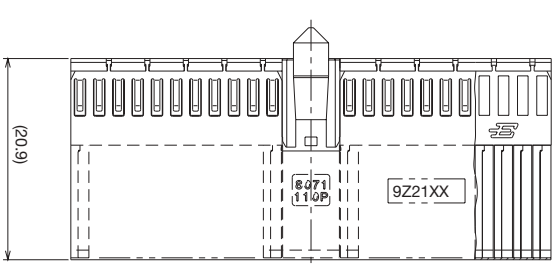
Series 8071



- 110 signal contacts in a 5 x 25 configuration
- Center cavity with pre-alignment guides and keying option (uses 3 positions)
- See page 53 for keying options
- Designed for gas tight press-fit installation
- Supplied with or without upper ground return shield
- Available with bottom pegs for secure P.C. mounting
- This connector can be used by itself or in conjunction with Style B or C connectors
- Used in positions J1/J4 of CompactPCI® specification (Daughter Card)
- Lower ground return shield available (see page 30)

- 27 8071 110 001 833** = Type A Right Angle Female without top shield, with pegs
- 27 8071 110 002 833** = Type A Right Angle Female without top shield, without pegs
- 27 8071 110 011 833** = Type A Right Angle Female with top shield, with pegs
- 27 8071 110 012 833** = Type A Right Angle Female with top shield, without pegs

Plating Code	Contact Area	Press-fit Area	Under Coat
833	0.1µm min. Au.65µm Pd/Ni	1.5-3.0µm Solder	Nickel 1.2-3.0µm



RECOMMENDED P.C. BOARD LAYOUT
(COMPONENT SIDE)